



**PRODUCER:**  
**AUTO-DEKOR sp. z o.o. sp.k.**  
 ul. Spółdzielcza 4, 38-420 Korczynna, Poland  
 e-mail: kontakt@autodekor.pl

**When used as intended and in accordance with the manufacturer's recommendations, the product is completely safe and poses no risk to users.**

**WARNING!**  
 use the product only for its intended purpose.  
 Any modifications to the product is prohibited.  
 The product is not a toy.

**Before installing and using the product,**  
 it is important to read the documentation  
 on the safe use and installation of the product.

**INSTALLATION MANUAL**

**SAFE INSTALLATION  
 AND SAFE USE MANUAL**



**SAFE INSTALLATION AND SAFE USE MANUAL**  
**tailor-made covers**  
**BUS 2+1: covers for driver's seat and passenger bench seat**

**NOTE! Please read the safety instructions and the installation manual supplied before starting the installation.**  
**Ensure your safety and that of your passengers by following the guidelines in this manual!**

**1. AUTO-DEKOR car seat covers are designed and manufactured specifically for certain car makes and models. They should only be used in compatible cars.**  
 The manufacturer/seller is not responsible for any direct or indirect damage or adverse consequences resulting from improper use of the products.

Car seat covers should be fitted directly onto the original car upholstery. It is essential to remove any previously used car seat protection, such as old covers or car seat protectors, etc., to ensure the correct functioning of the AIRBAG seams, which are key to the safety of the product.

Only fit the covers as specified on:

- Front seats
- Rear bench
- Rear seatback
- Headrests
- Other upholstery depending on the model and configuration of your car (e.g., additional armrests).

### 2. Eye protection:

To reduce the risk of injury, wear safety goggles when fitting the covers or have them fitted by a qualified vehicle service centre.

### 3. Installation instructions:

Install the covers according to the instructions supplied.

Ensure that the covers are correctly fitted to the seats, paying particular attention to the operation of the airbag system (see item 4), seat belts and other safety systems in the seats of your car.

Only correct installation of the covers will ensure durability, enhance the aesthetics of the interior and allow the correct operation of the airbags.

Incorrect installation may affect the safety, comfort and durability of the product.

### 4. Airbag compatibility

**NOTE: Incorrect installation may prevent the seat airbags from deploying correctly in the event of a collision, posing a serious risk to your safety!**

The covers are designed to be compatible with airbag systems (AIRBAG). Where airbags are present, the covers have a special seam that breaks when the airbags deploy without delaying them. As a result, the covers are suitable for both cars with and without airbags.

The solution has been tested by TÜV NORD Polska Sp. z o.o. and certified with the TÜV "Product Tested" safety mark.

Ensure that the covers are installed correctly and do not obstruct the airbag areas. Strict adherence to the installation instructions is essential for the correct functioning of the airbags in the event of an accident.

For seats equipped with side airbags, the side of the cover with the AIRBAG label must be fitted to the side of the seat where the airbag is located. Ensure that the special seam on the cover is aligned with the original seam on the seat.

Correct and careful installation of the covers is essential for full side airbag compatibility. Regularly inspect the covers to ensure that they are secure and do not move while driving. Check that the AIRBAG seam is correctly positioned. If you notice the covers shifting or not fitting properly, adjust them immediately. Do not use covers that are damaged or do not fit the seats.

### 5. Compatibility with heated seats:

AUTO-DEKOR covers are compatible with seat heating functions. Ensure that the covers do not obstruct or cover the seat heating controls. Do not use the covers if they are damaged or if there are problems with the heating functions.

### 6. Compatibility with ventilated seats:

AUTO-DEKOR covers are not compatible with the backrest and seat ventilation functions. If your vehicle has ventilated seats, please note that their performance may be reduced when using the covers.

### 7. Avoid blocking vehicle systems:

Ensure that the covers do not block air vents, seat ventilation systems or seat adjustment mechanisms, as this may affect their operation and safety.

### 8. Regular inspections:

Inspect the covers regularly to ensure that they are securely fastened and do not move while driving. Check that the AIRBAG seam is in the correct position and that the covers do not interfere with seat belts, safety systems or other seat mechanisms. Periodically inspect the covers for damage such as tears, abrasions or general wear and tear. If damage is found, always replace the upholstery to ensure safety and comfort.

### 9. Child safety:

The covers are not toys. Ensure that children and pets do not play with the covers or fasteners as this may cause choking or injury. Keep the outer packaging away from small children (risk of strangulation).

### 10. Warning – hot surfaces:

Avoid contact between the covers and hot surfaces, such as the car body or air vents, as this may deform or damage the material. Avoid fire. The covers are not fireproof. Keep them away from heat sources, naked flames and cigarettes.

### 11. Cleaning and maintenance:

Clean the covers according to the instructions on the product label, using a damp cloth and mild detergent. Avoid strong chemicals that may damage the material. Ensure that the covers are completely dry before use.

### 12. Storage:

Store the covers in a cool, dry place when not in use to prevent damage. Avoid exposure to direct sunlight which may cause fading.

### 13. Disposal:

If you need to replace or dispose of the product, follow your local waste disposal guidelines. The product may be recyclable at designated collection points.

### 14. The product is manufactured in Poland

in accordance with European Union regulations.  
**15. For questions, incident reports or recall information, please contact the manufacturer.**

### Manufacturer:

**AUTO-DEKOR sp. z o.o. sp.k.**, ul. Spółdzielcza 4, 38-420 Korczynna, Poland.  
 phone no. +48 13 43 898 101, email: kontakt@autodekor.pl



**INSTALLATION MANUAL**  
**tailor-made covers**  
**BUS 2+1: covers for driver's seat and passenger bench seat**

### NOTE!

**Please read the following installation manual and the safety instructions supplied before starting the installation.**

**Ensure the car is parked on level ground and the engine is switched off before starting the installation. Apply the handbrake for added safety.**

**Always wear safety goggles when fitting the covers to reduce the risk of injury!**

Remove any previously used car seat protection, such as old covers or car seat protectors, etc. Remove any sharp objects (e.g., keys, pens, tools) from the seats to prevent damage during installation. Thoroughly clean the seats thoroughly to remove dust, dirt, and debris for better adhesion of the covers.

### Only fit the covers as intended on:

driver's seat, passenger bench seat, headrests, other upholstery depending on the car model and configuration (e.g., additional armrests).

**Only correct installation of the covers will ensure durability, enhance the aesthetics of the interior and allow the correct operation of the airbags.**

### Driver's seat (single seat):

If your seat has an armrest or additional adjustment knobs on the upholstery, remove these before fitting the cover.

Remove the headrest from the seat. If the headrest cannot be removed, the cover may have a Velcro loop. Open the Velcro strap on the cover wide and slide it over the headrest, starting from either side.

Place the top of the cover evenly over the seat, starting at the top and working your way down. Make sure that the cover conforms to the shape of the seat, stretching if necessary to ensure a secure fit over the original upholstery (Fig. 1).

The covers are designed to be compatible with airbag systems (AIRBAG) in the front seats. Where airbags are present, the covers have a special seam (Fig. 2) that breaks when the airbags deploy without delaying them. As a result, the covers are suitable for both cars with and without airbags. The solution has been tested by TÜV NORD Polska Sp. z o.o. and certified with the TÜV "Product Tested" safety mark. For seats equipped with side airbags, the side of the cover with the AIRBAG label (Fig. 2) must be fitted to the side of the seat where the airbag is located, also aligning the special seam on the cover with the original seam on the seat. **Correct and careful installation of the covers is essential for full side airbag compatibility.**

Next, pull the component equipped with the elastic loops (Fig. 2, Fig. 4a, 4b) from the inside of the cover through the gap between the seat and the seatback so that it is visible from the back of the car seat. Later, this will allow the elastic loops to be attached to the structure at the bottom of the seat, providing stability for the cover.

If your seat has full back and it is not possible to insert the rectangular cover component under the seat, it includes a special expanding filler. This allows the stabilising component to expand slightly and remain securely in place when inserted into the gap. Next, place the lower part of the cover over the seat, carefully adjusting it to fit the shape of the seat.

Once the entire cover is in place, start to secure it.

**The covers have all the necessary holes to accommodate design components such as headrests, handles, armrests or backrest adjustment mechanisms.** Place them carefully under the plastic trim of the original components (Fig. 1), e.g., using a small screwdriver.

Place the factory holes on the headrests under the plastic trims in the seats.

If your headrest cannot be removed, fasten the Velcro strap that you have just undone around the headrest, leaving small sections of it undone at the headrest mounting holes. You can also insert these sections under the plastic trim of the original holes, e.g., using a small screwdriver.

Finally, proceed with securing the cover. At this stage, stretch and secure the rectangular component you have pulled between the seat and the seatback. Make any final adjustments to ensure that the cover is correctly aligned and taut. This will ensure that the cover adheres neatly and securely to the seat.

**When making final adjustments, check that the AIRBAG seam is in the correct position. If you notice the covers shifting or not fitting properly, adjust them immediately.**

There are two ways of securing the cover:

The first way is to attach the elastic loops using special hooks (Fig. 3a). Secure the elastic loops with hooks by attaching them to the loops on the opposite side, springs, holes, or other components under the seat (Fig. 4a).

The second way is to pull the supplied cord (Fig. 3b) through all the elastic loops of the mounted cover. Once this is done, tighten the cord and tie it off so that it forms a loop that connects all the small loops (Fig. 4b). Be sure to trim any excess cord.

### NOTE:

**- Do not attach the elastic loops or the straps to the sliding seat guides!**  
**- Always wear safety goggles when fitting the covers, especially the hooks, to reduce the risk of injury!**

### Passenger bench seat covers

Fit the part of the cover with factory holes for headrests, seat belts, etc., on the bench backrest (Fig. 5). Depending on the bench configuration of your car, the passenger bench seat covers may consist of one or more components (split covers, armrests, tables, etc.).

Remove the headrests. Place the cover evenly over the seatback (Fig. 5), starting at the top and working your way down.

If your car has a seat belt in the backrest, you will need to pull the belt through the factory hole. To do this, unscrew the belt holder (at the bottom, between the seat and the backrest), pull the belt through the hole in the cover, and securely reattach the holder. Make sure that the cover conforms to the shape of the seatback, stretching if necessary to ensure a secure fit over the original upholstery.

Align the factory holes in the covers with the plastic trim on the car seats.

The part of the cover intended for the passenger bench seat may consist of one or more components and may be separate from the seatback cover or integrated with it. Pull the cover on the bench seat (Fig. 5), starting at the bottom and working your way your way up.

Once the seat and backrest covers are in place, carefully stretch them out again. Start to secure them, similarly as you did on the driver's seat.

There are two ways of securing the cover:

The first way is to attach the elastic loops using special hooks (Fig. 3a). Secure the elastic loops with hooks by attaching them to the loops on the opposite side, springs, holes, or other components under or behind the bench (Fig. 6a).

The second way is to pull the supplied cord (Fig. 3b) through all the elastic loops of the mounted cover. Once this is done, tighten the cord and tie it off so that it forms a loop connecting all the small loops (Fig. 6b). Be sure to trim any excess cord.

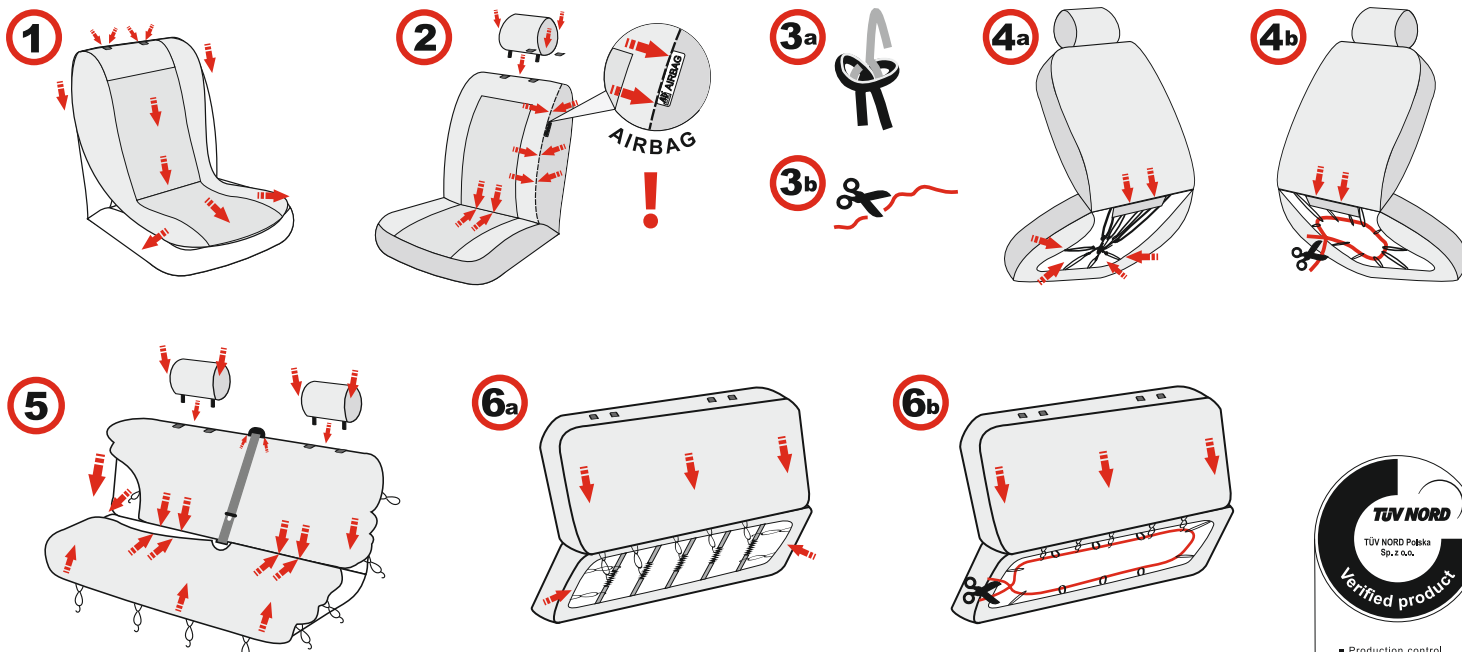
### NOTE:

**- Do not attach the elastic loops or the straps to the moving parts of the bench!**  
**- Always wear safety goggles when fitting the covers, especially the hooks, to reduce the risk of injury!**

### Installation of headrest, armrest and other upholstery covers

Fit the covers for the headrests, armrests, and other upholstery by carefully stretching them over each component, ensuring they are properly aligned and taut (Fig. 2, Fig. 5).

**NOTE: Do not secure headrest or armrest covers with hooks!**



- Production control
- Laboratory tests

No. 0000085305  
 www.certyfikat.tuv-nord.pl